



# FLAT TOP DECK CARGO BARGE - ARCTICLIFT

## GENERAL SPECIFICATION

**Owner/Operator:** Miller Shipping Limited  
**Registry Port:** St. John's, Newfoundland  
**Built:** 1973, Houma, Louisiana, USA  
**Official #:** 541165  
**Classification:** Formerly Ocean Class Barge as per ABS Rules (A1 Barge).

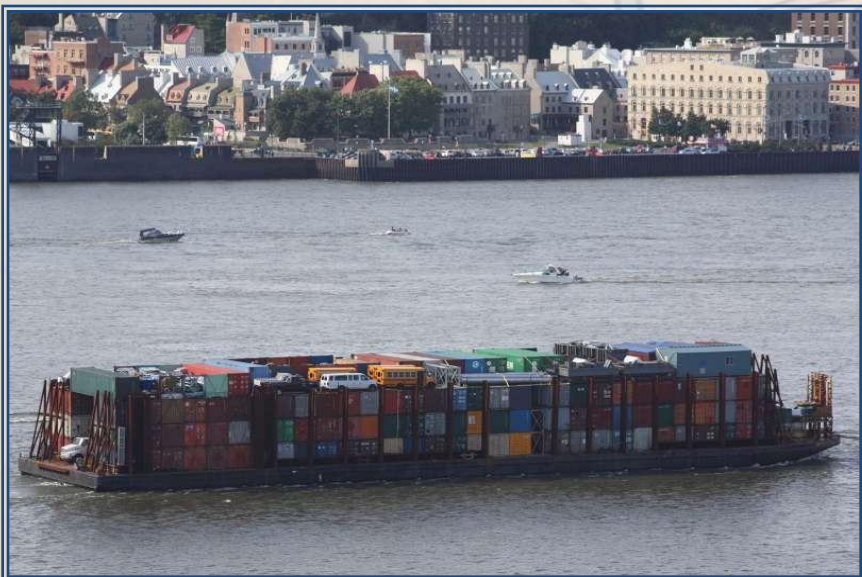
**Length Overall:** 90.70m / 300'  
**Breadth:** 21.95m / 72'  
**Depth:** 5.94m / 19'  
**Maximum Draught:** 4.67m / 15.4'  
**Gross Tonnage:** 3,302 T  
**Net Tonnage:** 3,302 T

## CAPACITIES

**Cargo Capacity:** 7,500 Tons  
**Deck Capacity:** 1,400 lbs / sq. ft.  
**Liquid Cargo:** 55,000 Bbls.

## SPECIAL FEATURES

- Specially designed bow for high speed towing in heavy seas.
- Heavy construction for both deck and chemical service.
- Barge fitted with removable Stanchions on deck to modify barge for increased carrying capacity for wood cargo.



**Miller Shipping Limited**  
**P.O. Box 8175, 43 Pippy Place**  
**St. John's, Newfoundland, Canada**  
**A1B 3M9**

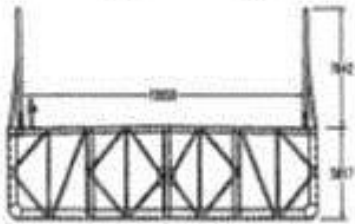
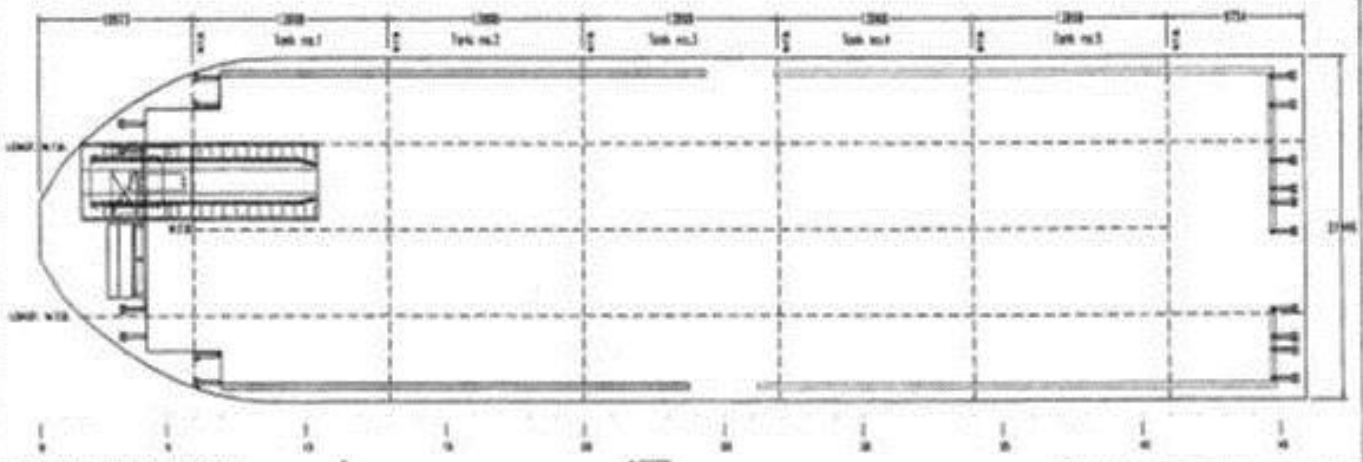
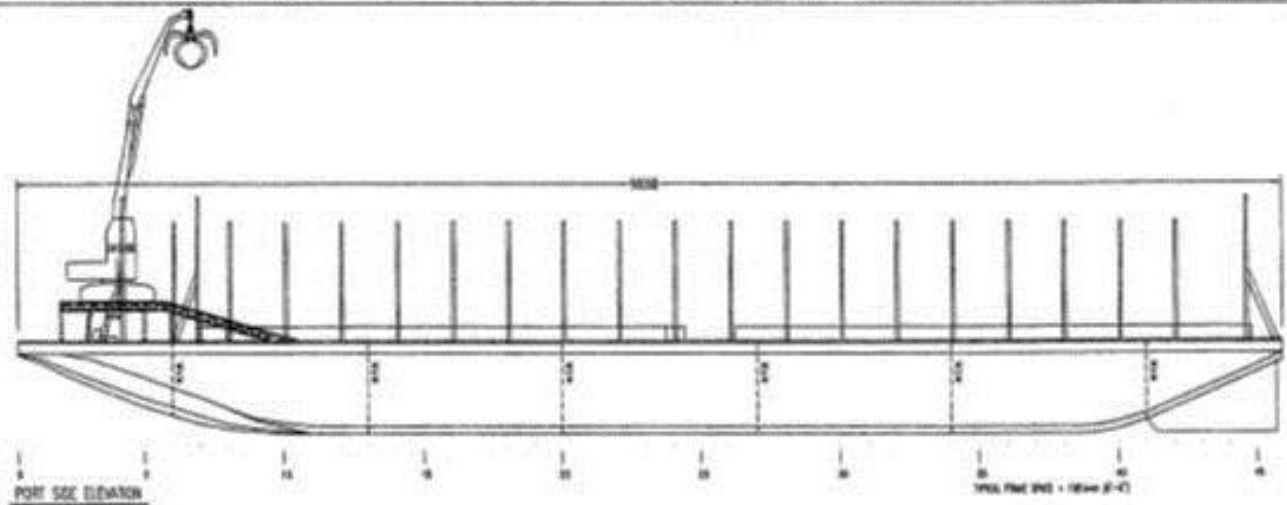
**Tel:** (709) 754-4543  
**Fax:** (709) 754-7011

For Commercial Inquiries / Vessel Chartering, please contact:  
Pat Miller: Mobile: (709) 690-4575 / [pat@millershipping.com](mailto:pat@millershipping.com)

# BARGE ARCTICLIFT - General Arrangement View

**ECHELLE DE CHARGEMENT - DEADWEIGHT SCALE**  
**EAU SALÉE - SALT WATER**

Long. Mètres Long. Feet	Tonn. Mètres Tonnes	Tonn. Mètres Tonnes	Tonn. Mètres Tonnes	Tonn. Mètres Tonnes
15	15000	15000	4	
14	14000	14000	5	
13	13000	13000	6	
12	12000	12000	7	
11	11000	11000	8	
10	10000	10000	9	
9	9000	9000	10	
8	8000	8000	11	
7	7000	7000	12	
6	6000	6000	13	
5	5000	5000	14	
4	4000	4000	15	
3	3000	3000	16	
2	2000	2000	17	



**TECHNICAL SPECIFICATIONS**

LEA = 26'-4"  
 BREADTH = 17'-0"  
 DPTH = 14'-0"  
 MAX DWT = 15'-4"  
 FRAME SPC 10' x 2'-0"

DECK ORGZ (TMS) = 700  
 LARG ORGZ (TMS) = 5000  
 NET TONNAGE = 270  
 GROSS TONNAGE = 270

Specially designed for high speed towing  
 in heavy seas.  
 Heavy construction for bulk deck and  
 chemical service.

**LE GROUPE OCEAN Inc.**

TEL: (418) 884-1414 FAX: (418) 882-4512  
 WEB: [www.oceangroup.com](http://www.oceangroup.com)

**OTM 3072**

**GENERAL VIEW & SPECS**

SCALE:	1:200	DATE:	2 February 99
REV:	16-07-2004	APPROVED:	